

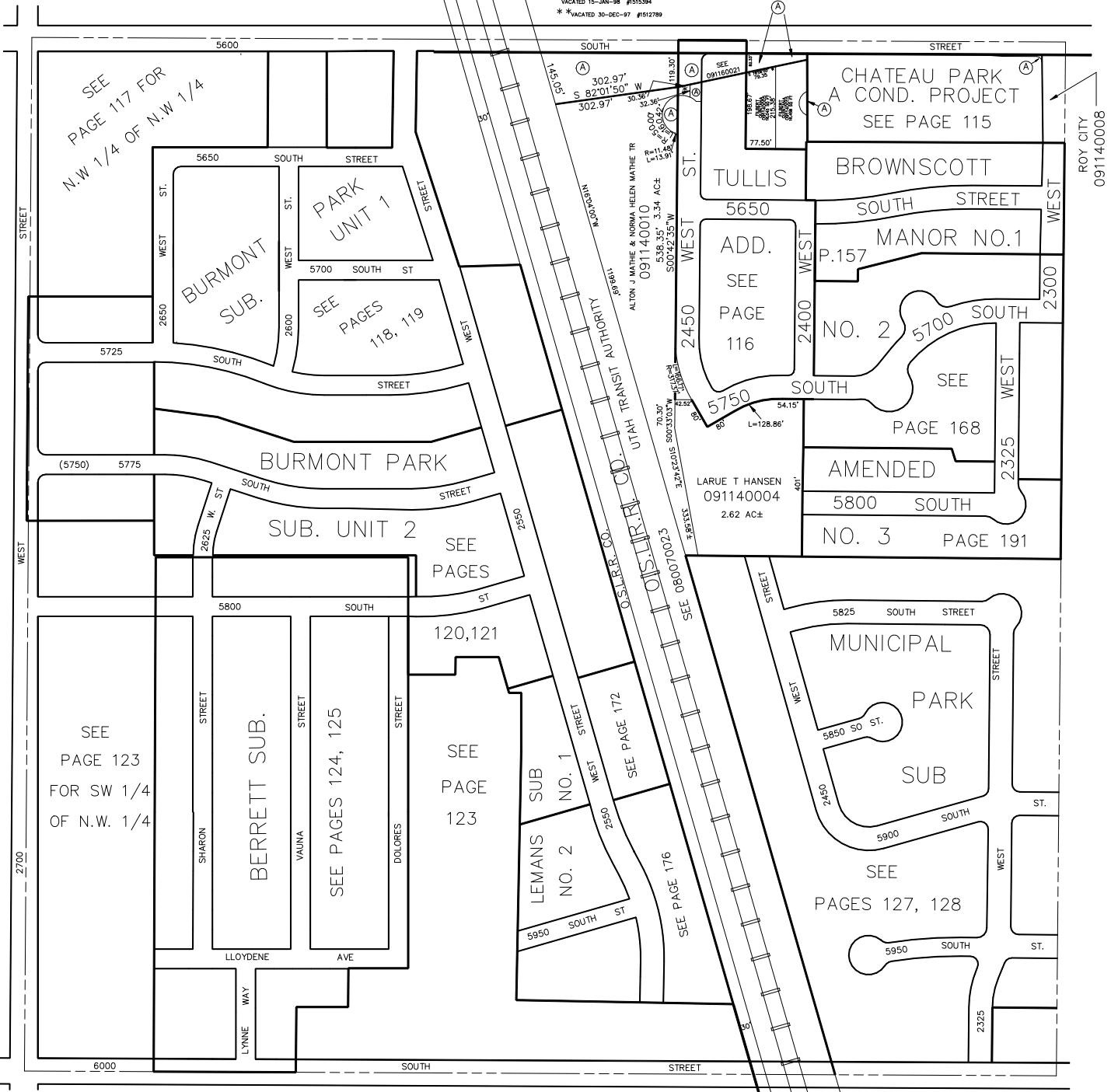
N.W. 1/4 OF
SECTION 23, T.5N., R.2W., S.L.B. & M.
 IN ROY CITY
 SCALE 1" = 200'

TAXING UNIT: 41

UTAH DEPT OF TRANS
 091140011
 FOR THE WIDENING
 OF 5600 S. ST. 1.54 AC±

SEE PAGE 1

* VACATED 15-JAN-98 #1515394
 * VACATED 30-DEC-97 #1512789



SEE PAGE 117 FOR
 N.W. 1/4 OF N.W. 1/4

PARK
 UNIT 1
 SEE PAGES
 118, 119

SUB. UNIT 2
 SEE PAGES

SEE
 PAGE 123
 FOR SW 1/4
 OF N.W. 1/4

BERRETT SUB.
 SEE PAGES 124, 125

SEE
 PAGE
 123

LEMANS
 SUB
 NO. 1
 NO. 2

MUNICIPAL
 PARK
 SUB

SEE
 PAGES 127, 128

CHATEAU PARK
 A COND. PROJECT
 SEE PAGE 115

TULLIS
 ADD.
 SEE
 PAGE
 116

BROWNSCOTT
 MANOR NO. 1

AMENDED
 5800 SOUTH

NO. 3
 PAGE 191

5825 SOUTH STREET

MUNICIPAL
 PARK

SUB

5850 50 ST.

5900 SOUTH

SEE
 PAGES 127, 128

5950 SOUTH

2325

2325

2325

ROY CITY
 091140008

SEE PAGE 111

SEE PAGE 93

SEE PAGE 109

SEE PAGE 85

SEE PAGE 139